

Maxi® Plating Barrels

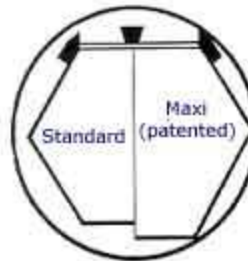
Singleton manufactures a large selection of plating barrel assemblies to equip most manual and automatic hoist/tank systems.

Unique, patented [Maxi® barrel geometry](#) lets you choose sizes to meet your productivity goals. Because you can install a larger capacity Maxi® barrel in your present tank system, output is increased. (For example, an 18" Maxi® barrel fits in a 16" barrel line.) Maxi® barrels place the work closer to the anodes for better current densities and faster plating. Singleton plating barrels feature 23% open panel area which brings the best of both worlds, strength and efficiency.



Maxi® Barrel Advantages:

- Greater capacity in a standard size superstructure
- Premium grade, high-temperature polypropylene
- [Fuse-Fab®](#) fusion welded panels and heads
- [Poly-Ripple®](#) interior panel surfaces
- 3/32", 1/8", 5/32", 3/16", 7/32", or 1/4" perforations
- [Steel-Core®](#) ribs
- Clamp or knob style door



Cylinder Options:

- Custom: length, diameter, and panel thickness
- Optional perforations: diameter, profile, pattern (i.e. herringbone, greater open area, etc.)
- Special: tumbling bars, external girths, partitions
- Custom contacts: disc, cup, "hairpin", strip, center bar, chain
- Door options: Fully-automatic, sectional, slide-lock, swivel-lock

Superstructure Features:

Low-Boy® design speeds of hoist transfer time,.Heavy-duty frame and pick-up hook will not deflect when loaded. Horn or inverted-V "floating" tank contacts combined with angled Dura-Danglers 4/0 cable with sleeves allow for efficient electrical contact. Stainless steel drive shaft E-Z change bolted hubs and alloy fasteners below solution level



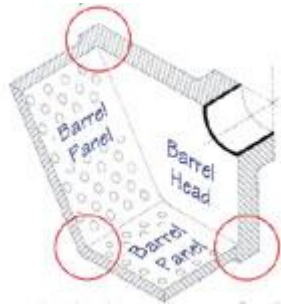
mean easy maintenance for years to come.
"Bulldog tough" gear drive trains stand up to the test.

Superstructure Options:

Custom design superstructure, contacts: horn, inverted "V", "knife", Motor packages: AC, DC, and AIR, Automatic hoist pick-up adapters "Up-rotation" provisions, Corrosion resistant crossbeam coatings, Acid protection packages, bearings: UHMWPE, Teflon, High-Wear, Power-Matic Door® fully automatic door operation

Fuse-Fab® Construction:

Singleton barrels are made with premium grade, high temperature polypropylene and innovative Fuse-Fab® construction assuring quality and durability. Fuse-Fab® joins sections of plastic material, in a controlled thermal process, creating a single uniform section. The result is a seamless plating barrel with tremendous strength and integrity.



Steel-Core® Reinforcement:

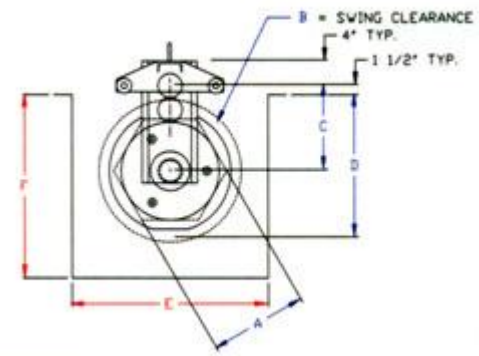
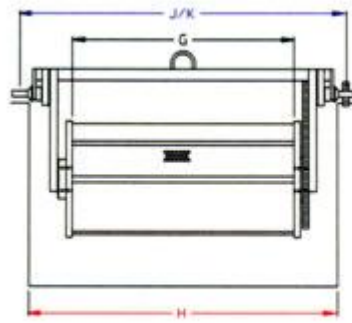
Door handles, door ribs and side ribs incorporate Steel-Core® construction, eliminating warping and parts loss while enhancing overall durability. Steel-Core® encapsulated reinforcing provides superior strength and extended service life to every Singleton production barrel.



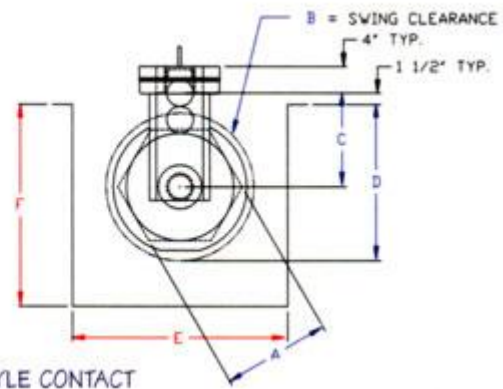
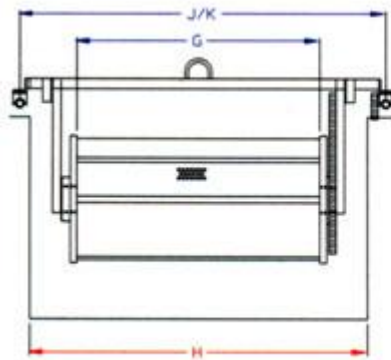
Poly-Ripple® Panel Interior:

Poly-Ripple® barrel panels have a series of parallel grooves over the entire length of the interior surfaces. Poly-Ripple® is an exclusive feature of all Singleton production plating barrels. Poly-Ripple® promotes material tumbling, eliminates nesting, increases current flow to the load, allows faster draining, faster drying and less drag-out.





"HORN" STYLE CONTACT



INVERTED "V" STYLE CONTACT

Maxi® Barrel Sizing

A	G					
	24	30	36	42	48	60
12	x	x	x	-	-	-
14	x	x	x	x	-	-
16	x	x	x	x	-	-
18	x	x	x	x	x	x
20	x	x	x	x	x	x
22		x	x	x	x	x
24			x	x	x	x